



CONSULTING ENGINEERS & PROJECT MANAGERS



2020

COMPANY PROFILE



BICON Group - Introduction

The BICON Group has over 60 years experience in Infrastructure and Transport Sectors in Southern Africa. The Group represents an excellent combination of local, regional and international experience. With specialist knowledge in a wide range of disciplines, the BICON Group is able to combine and draw from the expertise of the companies in the region enabling the Group to offer multi-sectored services. This combined expertise is harnessed in carrying out integrated infrastructure assignments offering the Client a “one-stop-shop” in consulting services.



Over 80% of the workforce in the BICON Group has attained tertiary qualifications from reputable universities and engineering institutions. The group has also invested



significantly in state-of-the-art computer hardware and software, for technical, administrative and project management applications.



CONSULTING ENGINEERS & PROJECT MANAGERS (PTY) LTD.

BICON Zambia Limited

BICON Zambia Ltd is a member of the BICON Group of Companies and operates closely in conjunction with other BICON offices in Namibia, Swaziland, Botswana, Zimbabwe, South Africa and the United Kingdom. BICON Zambia has been actively operating in Zambia since 1999 although its holding company BICON Namibia was established in 1957 and has been operating in Namibia for over 60 years.

Being part of a large group of companies enables BICON Zambia to draw specialised human and technical skills from a big pool of resources within the BICON Group of Companies. This makes it possible for BICON Zambia to mobilise resources and create the necessary critical mass required to respond to the demands of large projects.

Since the early days of the firm's existence, it has always been BICON's policy to employ

and train as many local staff as possible in order to provide a long-term sustainable



and effective base of local expertise. The BICON Group ensures that this objective is achieved by adopting a local management structure that is always geared and committed towards the sustainable transfer of skills and the empowerment of local staff.

The Managing Director of BICON Zambia Ltd is Mr R. Mushingi who is a Zambian national and has over 35 years of experience in the design, supervision and project management of a wide range of civil and structural engineering projects.

The BICON Group has competencies and expertise in the following fields:

- Project Management;
- Structural Engineering;
- Civil Engineering;
- Roads and Transportation Engineering;
- Electrical Engineering
- Electronics Engineering
- Telecommunications and Information Technology;
- Water and Sanitation Engineering;
- Mechanical Engineering;
- Pavement and Airport Engineering;
- Topographic and Hydrological Surveys;
- Preliminary Investigations and Feasibility Studies;
- Labour Based and Community Projects;



The major services as offered by the group are as follows:

- Engineering Designs;
- Project Management;
- Site Supervision;
- Engineering Surveys;
- Cost Estimates;
- Contract Documentation;
- Quantity Surveying;
- Quality Control;
- Commissioning of Plant;
- Technical Advice;
- Project Co-ordination;
- Interaction with Local Communities.

The BICON Group has access to a vast pool of specialised personnel resources which can be draw from for Highway and Road Rehabilitation Projects. Over 80% of the workforce in the BICON Group has attained tertiary qualifications from reputable Universities and Engineering Institutions. The Group has also invested significantly in state-of-the-art computer hardware and software, for technical, administrative and project management applications.

BICON Zambia Limited – Directors and Nationalities

- Mr Renatus Mushinge – CEO and Managing Director (Zambian)
- Mr Davis Chansa – Director (Zambian)

ENGINEERING & PROJECT MANAGEMENT

PROJECT SHEET

**RADISSON BLU RESORT AT
THE MOSI-OA-TUNYA
LIVINGSTONE RESORT**

CLIENT	: NAPSA
PROJECT MANAGERS	: SIP Project Managers
ENGINEERS (Civil, Structural & Electrical)	: BICON Zambia Ltd
ARCHITECTS	: DSA Architects
QUANTITY SURVEYORS	: MLC Quantity Surveyors
MAIN CONTRACTORS	: Stefanutti Stocks
PROJECT COST	: \$90 Million

DESCRIPTION

The Radisson Blu Resort is a 200-Key 4-star Resort being constructed at in the Mosi-Oa-Tunya National Park Construction commenced in 2020



ENGINEERING & PROJECT MANAGEMENT

PROJECT SHEET

KITWE GARDEN COURT HOTEL

CLIENT	: NAPSA
PROJECT MANAGERS	: SIP Project Managers
ENGINEERS (Civil, Structural & Electrical)	: BICON Zambia Ltd
ARCHITECTS	: Robert Silke & Partners
QUANTITY SURVEYORS	: MLC Quantity Surveyors
MECHANICAL ENGINEERS	: DH Engineering Consultants
MAIN CONTRACTORS	: Stefanutti Stocks
PROJECT COST	: \$25 Million

DESCRIPTION

The Kitwe Garden Court Hotel is a 130-Key 4-star Hotel constructed at Kitwe Freedom Park as part of the ECL Business park Development. Construction commenced in 2016 and completed in 2018



ENGINEERING & PROJECT MANAGEMENT

PROJECT SHEET

**HILTON CURIO HOTEL AT
RHODES PARK HEIGHTS,
LUSAKA**

DESCRIPTION

The Rhodes Park Heights Mixed Use Development Project is a 9-Storey, 10,000sqm Project in Lusaka, Zambia.

The Project consists of a 100-Key Hilton Curio Hotel, Hussar Grill Restaurant and Sweet Magnolia Restaurant.

CLIENT	: African Eagle Hotels & Resorts
PROJECT MANAGERS	: BICON Zambia Ltd
ENGINEERS	: BICON Zambia Ltd (All Disciplines)
ARCHITECTS	: DSA Architects & Shelter Designs
QUANTITY SURVEYORS	: MLC QS & KV Siwale & Associates
MAIN CONTRACTORS	: Wah Kong Construction Co.
PROJECT COST	: \$26 Million





PROPERTY DEVELOPERS & PROJECT MANAGERS

ENGINEERING & PROJECT MANAGEMENT

PROJECT SHEET

HILTON GARDEN INN HOTEL, & BUSINESS PARK AT SOCIETY BUSINESS PARK LUSAKA, ZAMBIA

DESCRIPTION

The Hilton Garden Inn Hotel is 3-Star 148-Keys Hotel in Lusaka CBD and part of the Re-development of Society House and Central Arcade for the Zambia National Building Society (ZNBS) supported by National Pension Scheme Authority (NAPSA).

The project also comprises of 7,000 m² A-Grade Offices, 12,000 m² Shopping centre and restaurants and 30,000 m² Multilevel secure, covered parking garage with 1,068 parking bays.

CLIENT	: ZNBS/NAPSA
PROJECT MANAGERS	: BICON Zambia Ltd
ENGINEERS	: BICON Zambia Ltd (All Disciplines)
ARCHITECTS	: Louis Karol
QUANTITY SURVEYORS	: HBC QS
MAIN CONTRACTORS	: Yangts Jiang Enterprises Limited & African Brothers Construction
PROJECT COST	: \$100 Million



ENGINEERING & PROJECT MANAGEMENT

PROJECT SHEET

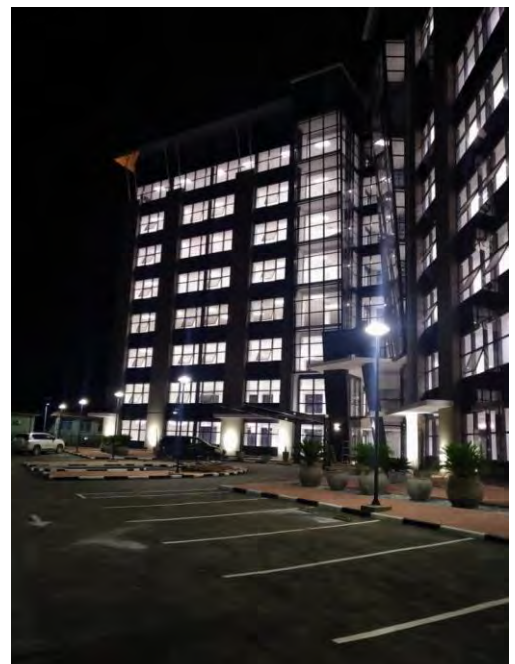
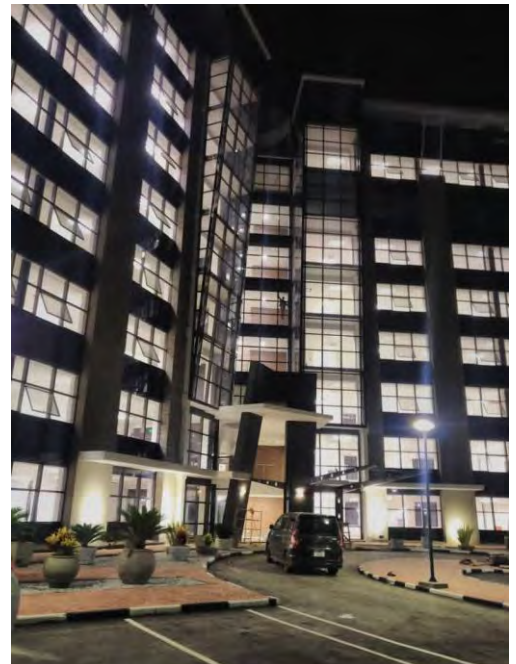
**ZEP-RE OFFICE
PARK, ALICK NKHATA ROAD,
MASS MEDIA AREA
LUSAKA, ZAMBIA**

DESCRIPTION

The ZEP-RE Office Park Building commenced construction in 2017 and is set to be completed in 2019

BICON Zambia Limited were the consulting engineers. The project, will encompass 9,900 m² Grade A Offices with a parking garage that can accommodate 195 parking bays.

CLIENT : ZEP-RE (PTA Reinsurance Company)
ENGINEERS : BICON Zambia Ltd
ARCHITECTS : Tectura International (Pty) Ltd
QS : Adam Hood & Partners
PROJECT COST : \$20 Million



ENGINEERING & PROJECT MANAGEMENT

PROJECT SHEET

**NAPSA OFFICE PARK AT
ECL BUSINESS PARK**

DESCRIPTION

The NAPSA Office park at Kitwe Freedom Park is 9,600 m² A- Grade Commercial fully serviced office Park, all air-conditioned with over 400- parking bays.

It is part of the ECL Business Park Development Project.

CLIENT	: NAPSA
PROJECT MANAGERS	: SIP Project Managers
ENGINEERS	: BICON Zambia Ltd (Civil, Structural & Electrical)
ARCHITECTS	: Robert Silke & Partners
QUANTITY SURVEYORS	: MLC Quantity Surveyors
MAIN CONTRACTORS	: Stefanutti Stocks
PROJECT COST	: \$25 Million





bicon
Group

CONSULTING ENGINEERS & PROJECT MANAGERS (PTY) LTD.

ENGINEERING & PROJECT MANAGEMENT

PROJECT SHEET

MODERNISATION AND UPGRADING OF NDOLA CENTRAL HOSPITAL INTO A SPECIALISED HOSPITAL



CLIENT	: Government of the Republic of Zambia
ENGINEERS	: BICON Zambia Ltd (All Disciplines)
ARCHITECTS	: Shelter Designs & LEAP Health Planners & Architects
QUANTITY SURVEYORS	: KV Siwale and Associates
PROJECT COST	: US\$43 Million





bicon
Group

CONSULTING ENGINEERS & PROJECT MANAGERS (PTY) LTD.

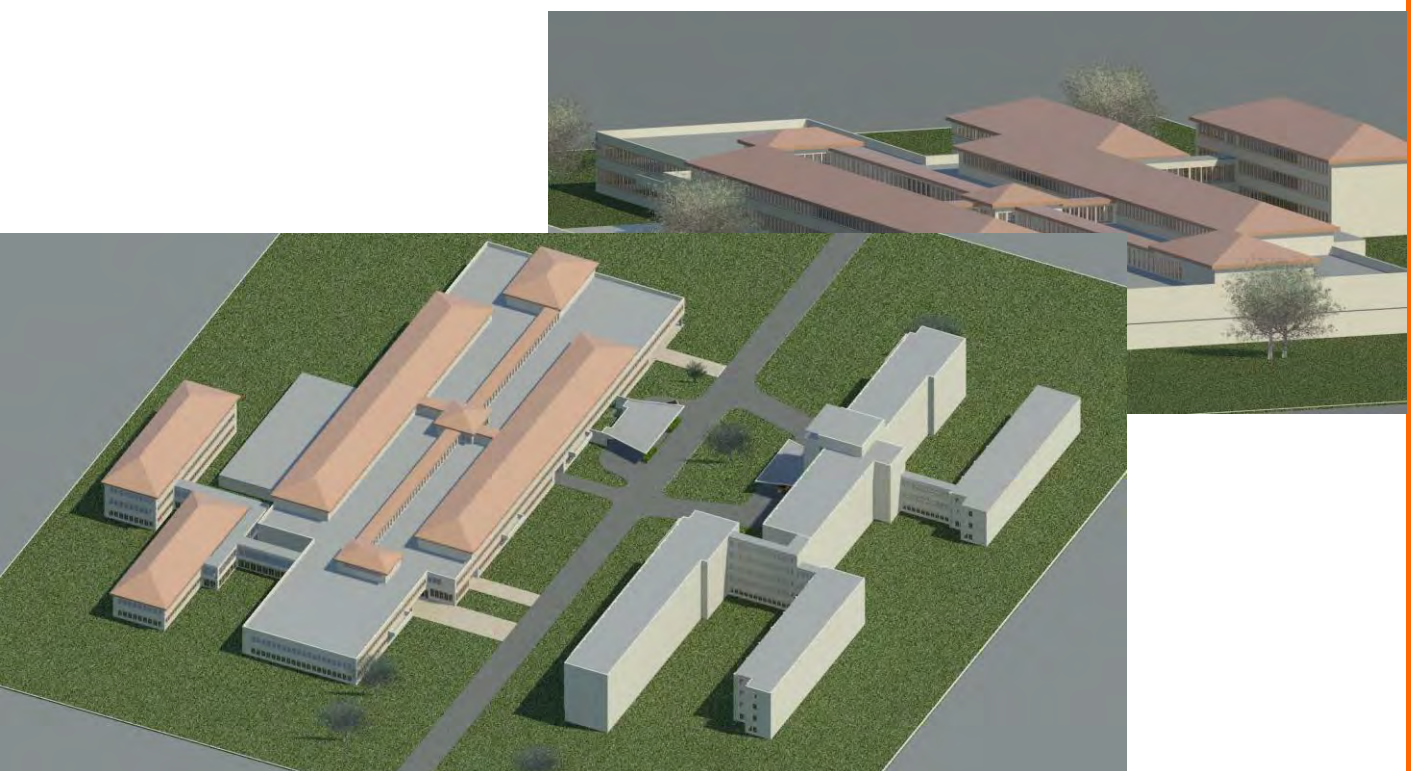
ENGINEERING & PROJECT MANAGEMENT

PROJECT SHEET

MODERNISATION AND UPGRADING OF KITWE CENTRAL HOSPITAL INTO A SPECIALISED HOSPITAL



CLIENT	: Ministry of Health, Government of Republic of Zambia
ENGINEERS	: BICON Zambia Ltd (All Disciplines)
ARCHITECTS	: Mwangala Mwenda Architects & LEAP Health Planners & Architects
QUANTITY SURVEYORS	: KV Siwale and Associates
PROJECT COST	: US\$35 Million



ENGINEERING & PROJECT MANAGEMENT

PROJECT SHEET

**LUSAKA CIRCLE,
LUSAKA, ZAMBIA**

DESCRIPTION

In 2007, Saturnia Regna Pension Trust Fund commissioned BICON Zambia Limited as Structural Engineers for the Construction of a multi-storey (with a basement) office block on Plot No. 4647 Beit Road in Rhodes Park , Lusaka

BICON Zambia Ltd were responsible for the design and supervision of structural engineering works.

CLIENT : Saturnia Regna Pension Trust Fund
FUNDING : Saturnia Regna Pension Trust Fund
ENGINEERS : BICON Zambia Ltd
ARCHITECTS : GS Architect
CONTRACTOR : Nemerit Enterprises Limited
DATE : September 2007 to 2009
PROJECT COST : US\$ 15million



ENGINEERING & PROJECT MANAGEMENT

PROJECT SHEET

**ZAMBIA CENTRE FOR
ACCOUNTANCY STUDIES (ZCAS)
LUSAKA, ZAMBIA**

DESCRIPTION

In 2008, Zambia Centre for Accountancy Studies (ZCAS) commissioned BICON Zambia Limited as Civil and Structural Engineers for the Construction of the New Campus on Plot adjacent to the existing campus along Didani Kimathi Road in Lusaka

BICON Zambia Ltd are responsible for the design and supervision of Civil and Structural engineering works.

CLIENT : Zambia Centre for Accountancy Studies (ZCAS)
FUNDING : Zambia Centre for Accountancy Studies (ZCAS)
ENGINEERS : BICON Zambia Ltd
ARCHITECTS : Spectrum Architectural Consultants
CONTRACTOR : Yangts Jiang Enterprises Limited
DATE : 2008 to 2010



ENGINEERING & PROJECT MANAGEMENT

PROJECT SHEET

**ADDITIONS AND IMPROVEMENTS
TO NSEFU HOUSE FOR MADSON
INSURANCE, LUSAKA, ZAMBIA**

DESCRIPTION

In 2004, Madson Insurance Company (Zambia) Limited commissioned BICON Zambia Limited as Civil/Structural and Electrical Engineers for the Rehabilitation and Extensions to Nsefu House on Cairo Road in Lusaka

The project, which consists of extending the existing 3 storey building to 6 storey shall be the Headquarters of Madison Life Insurance Company (Zambia) Limited.

Bicon Zambia Ltd are responsible for the design and supervision of all the engineering disciplines which include, civil, structural, mechanical and electrical engineering works. The project is on site and will be completed in 2006.

CLIENT	: Madson Insurance Company (Z) Limited
FUNDING	: Madson Insurance Company (Z) Limited
ENGINEERS	: BICON Zambia Ltd
ARCHITECTS	: Reynold & Vida (S.A) in association with G Nyau Architects (Zambia)
CONTRACTOR	: Yangts Jiang Enterprises Limited
VALUE	: US\$ 3.0Million
DATE	: 2004 to 2008



ENGINEERING & PROJECT MANAGEMENT

PROJECT SHEET

**PROPOSED MEDI-CLINIC
FOR MADISON HEALTH
SOLUTIONS**

DESCRIPTION

In 2009, Madison Insurance Company (Zambia) Limited through Madison Health Solutions commissioned BICON Zambia Limited as Civil/Structural and Mechanical Engineers for the construction supervision of Madison Health Medi-Clinic on Enock Kavu Road in Rhodes Park, Lusaka

The project, which consisted of construction of a 2 storey structure to accommodate a mspecial of extending the existing 3 storey building to 6 storey shall be the Headquarters of Madison Life Insurance Company (Zambia) Limited.

BICON Zambia Ltd were responsible for the design and supervision of the engineering disciplines which include, civil, structural and mechanical engineering works. The project is on site and will be completed in 2010.

CLIENT	: Madison Health Solutions (Z) Limited
FUNDING	: Madison Life Insurance Company (Z) Limited
ENGINEERS	: BICON Zambia Ltd
ARCHITECTS	: Goodwin Nyau Architects
CONTRACTOR	: Wah Kong Enterprises Limited
VALUE	: US\$ 1.0Million
DATE	: 2009 to 2010



ENGINEERING & PROJECT MANAGEMENT

PROJECT SHEET

**NEW HEAD OFFICE FOR LSA
316 INDEPENDENCE AVENUE
LUSAKA, ZAMBIA**

DESCRIPTION

In 2005, Lawrence Sikutwa Associates (LSA) commissioned BICON Zambia Limited as Civil/Structural and Electrical Engineers for the Rehabilitation and Extensions of New offices on in Plot No. 316 Independence Avenue, Lusaka

The project, which consists of rehabilitating and extending the existing building shall be the Headquarters of Lawrence Sikutwa Associates (LSA) .

Bicon Zambia Ltd are responsible for the design and supervision of all the engineering disciplines which include, civil, structural, mechanical and electrical engineering works.

CLIENT	: Lawrence Sikutwa Associates (LSA)
FUNDING	: Lawrence Sikutwa Associates
ENGINEERS	: BICON Zambia Ltd
ARCHITECTS	: Reynold & Vida (S.A) in association with G Nyau Architects (Zambia)
CONTRACTOR	: Yangts Jiang Enterprises Limited
DATE	: 2005 to 2008



ENGINEERING & PROJECT MANAGEMENT

PROJECT SHEET

**NATIONAL INSTITUTE OF PUBLIC
ADMINISTRATION
LUSAKA, ZAMBIA**

DESCRIPTION

In 2007, National Institute of Public Administration (NIPA) commissioned BICON Zambia Limited as Structural Engineers for the Construction of Two-Classroom Blocks on Stand No. 4810, Dushambe Road NIPA Campus, Lusaka.

Bicon Zambia Ltd are responsible for the design and supervision of structural engineering works.

CLIENT : National Institute of Public Administration (NIPA)
FUNDING : National Institute of Public Administration (NIPA)
ENGINEERS : BICON Zambia Ltd
ARCHITECTS : PJP Architects
CONTRACTOR : Millers Construction Limited
DATE : 2007 to 2009



ENGINEERING & PROJECT MANAGEMENT

PROJECT SHEET

**PROPOSED SECRETARIAT FOR
THE FOOTBALL ASSOCIATION OF
ZAMBIA, LUSAKA**

DESCRIPTION

In the year 2000, the football Association of Zambia (FAZ) commissioned Bicon Zambia Limited as the consulting Engineers and project managers for their proposed Secretariat building on Alick Nkhata road. The project was funded under the FIFA Goal Project. The building is a double storey which shall accommodate the FAZ Secretariat on the ground floor and the first floor is to be let out to commercial tenants. Bicon Zambia is responsible for the design and supervision of the civil, structural, mechanical and electrical Engineering services.

Client: Football Association of Zambia
Architects: Anderson & Anderson International
Engineers: Bicon Zambia Limited
Contractor: China Jiangxi Corporation
Funding: FIFA Goal Project
Value: US\$1.0 Million





bicon
Group

CONSULTING ENGINEERS & PROJECT MANAGERS (PTY) LTD.

ENGINEERING & PROJECT MANAGEMENT

PROJECT SHEET

NEW CATHOLIC CATHEDRAL OF CHILD JESUS – LUSAKA, ZAMBIA

DESCRIPTION

In 1999, The Project Committee of the Roman Catholic Church in Zambia commissioned the Planning & Design Partnership as Architects and Bicon Zambia in association with Towbridge, Higson-Smith of South Africa as Engineers.

The project which is the flagship cathedral of the Roman Catholic Church in the new millennium in Zambia, will be able to sit over 1000 people and host national and international masses and events.

Bicon Zambia Ltd are responsible for the design and supervision of all the engineering disciplines which include, civil, structural, mechanical, electrical engineering works and acoustics. The project was completed in 2003.

CLIENT	: The Roman Catholic Church
FUNDING	: The Roman Catholic Church
ARCHITECTS	: Planning & Designing Consultants
ENGINEERS	: BICON Zambia Ltd (All disciplines)
VALUE	: US\$ 2.7 million
DATE	: 2003



ENGINEERING & PROJECT MANAGEMENT

PROJECT SHEET

**PYRAMID PLAZA
OFFICE BLOCK
LUSAKA, ZAMBIA**

DESCRIPTION

In 2001, Anderson & Anderson Architects in association with Bicon Zambia Ltd were commissioned by Pyramid Plaza as the consultants on the construction of a three storey ultra-modern office block which will accommodate two international banks and an accounting firm.

Bicon Zambia Ltd are responsible for the design and supervision of all the civil and structural works on the project which is expected to be completed within a period of two years.

CONSULTANCY SERVICES FOR DESIGN
AND SUPERVISION

Client:	Pyramid Plaza
Funding:	African Banking Corporation
Architects:	Anderson + Anderson International
Consultant:	Bicon Zambia (Civil and Structural Engineering)
Value:	US\$ 3.0 Million
Date:	2002 – To 2005



ENGINEERING & PROJECT MANAGEMENT

PROJECT SHEET

**PROPOSED RESOURCE CENTRE
FOR THE ZAMBIA INSTITUTE OF
CHARTERED ACCOUNTANTS (ZICA)
LUSAKA**

Client: Zambia Institute of Chartered Accountants (ZICA)

Engineers: BICON Zambia Limited

Architects: Spectrum Architectural Consultants

Funding: World Bank

Value: US\$0.75 Million

DESCRIPTION

In the year 2002, Spectrum Architectural Consultants as Architects and BICON Zambia Limited as the Engineers were appointed by the Zambia Institute of Chartered Accountants (ZICA) for the design and supervision of works for the construction of their resource centre. This project consisted of the main office block building accommodating the Resource Centre and Library with parking and access roads as phase I and phase II being the Conference Centre and Cafeteria including access Roads and parking space.

BICON Zambia Limited were responsible for the design and supervision of civil, structural, mechanical and electrical works including water and Sewerage reticulation



ENGINEERING & PROJECT MANAGEMENT

PROJECT SHEET

**ZESCO TRAINING CENTRE -
NDOLA, ZAMBIA**

CONSULTANCY SERVICES FOR DESIGN
AND SUPERVISION

Client: Zambia Electricity Supply Corporation Limited (ZESCO)

Funding: World Bank (IDA Credit)

Architects: Anderson + Anderson International

Consultant: Bicon Zambia (Civil and Structural Engineering)

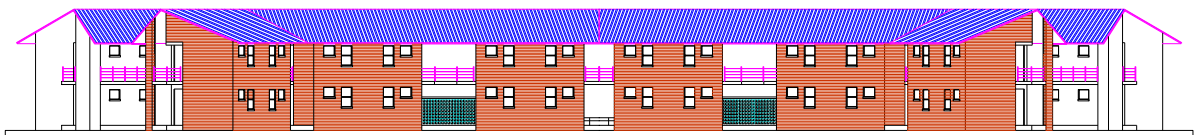
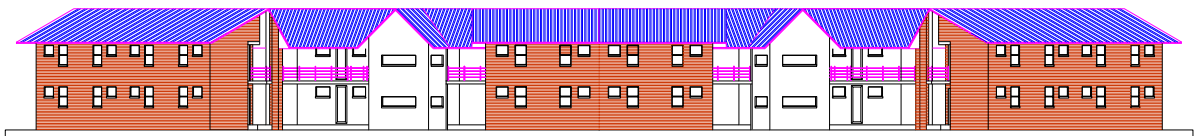
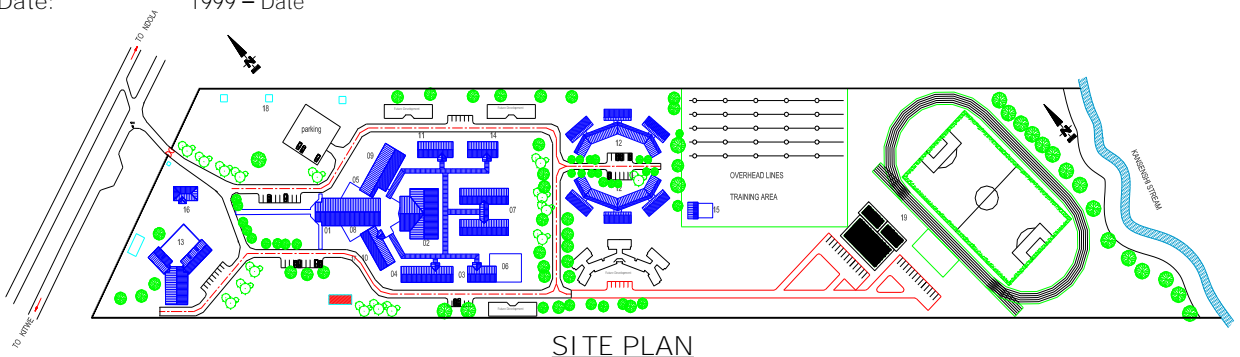
Value: US\$ 2.5 Million

Date: 1999 – Date

DESCRIPTION

In 1999, Anderson & Anderson Architects in association with Bicon Zambia Ltd were commissioned by ZESCO as the consultants on the **rehabilitation of ZESCO's Training Centre in Ndola, Zambia.** The project aims at improving the Ndola Training Centre to World class Standards with a view to secure the human resources requirements, build capacity and professionalism for ZESCO. The project will basically constitute two major parts. The first phase is the physical works which, will involve comprehensive rehabilitation of the old buildings as well as construction of new buildings, with new technical workshops, a training substation, a laboratory, common room/gym, hostels, kitchen, canteen and an auditorium. The second aspect addresses upgrading the Training Centre Staff, development of curriculum based on needs of the electricity industry, purchase of appropriate training equipment/tools, and stocking the library with updated study materials.

Bicon Zambia Ltd were responsible for the design and supervision of all the civil and structural works on the project which is expected to be completed with a period of three years.



ENGINEERING & PROJECT MANAGEMENT

PROJECT SHEET

**PROPOSED ZAMBIA REVENUE
AUTHORITY (ZRA) BORDER POST
& STAFF HOUSING IN LUANGWA**

DESCRIPTION

In the year 2002, the Zambia Revenue Authority commissioned PJP Associates as Architects and Bicon Zambia Limited as the Engineers for the Design and Supervision of the construction of the border post, ware house, vehicle and truck parking areas and staff houses in Luangwa.

Bicon Zambia Limited are responsible for the design and supervision of civil, structural, mechanical and electrical works including water sewerage Reticulation and quality control

Client: Zambia Revenue Authority (ZRA)
Engineers: Bicon Zambia Limited
Architects: PJP Associates
Funding: Zambia Revenue Authority (ZRA)
Value: US\$1.2 Million



ENGINEERING & PROJECT MANAGEMENT

PROJECT SHEET

**VUMA SERVICE
STATION AT MOSI O TUNYA ROAD
LIVINGSTONE, ZAMBIA**

DESCRIPTION

In the year 2002, Bicon Zambia Limited were appointed as Engineers by Pegasus Energy South Africa for the design and supervision of works for the construction of the new Service Station in Livingstone. This project consists of the main building to accommodate a shop, filling station and adjacent fuel depot.

Bicon Zambia Limited were responsible for the design and supervision of civil, structural, mechanical and electrical works including water and Sewerage reticulation, access roads and drainage works.

Client: Pegasus Energy South Africa

Engineers: Bicon Zambia Limited

Architects: Playline Argitekto -O- Architects

Funding: Pegasus Energy South Africa

Value: US\$1.0 Million



ENGINEERING & PROJECT MANAGEMENT

PROJECT SHEET

**NEW ASSEMBLY HALL FOR THE
ASSOCIATION OF JEHOVAH'S
WITNESSES – LUSAKA, ZAMBIA**

DESCRIPTION

In 2004, The Association of Jehovah's Witnesses in Zambia commissioned BICON Zambia Limited as Project Managers for the construction of the new Assembly Hall along Kamloops road in Lusaka

The project, which is to be one of the biggest Assembly Halls for the Association in Zambia, will be able to sit over 3000 people and host national and international masses and events.

Bicon Zambia Ltd are responsible for the design and supervision of all the engineering disciplines which include, civil, structural, mechanical and electrical engineering works. The project is on site and will be completed in February 2005.

CLIENT : The Association of **Jehovah's** Witnesses
FUNDING : The Association of **Jehovah's** Witnesses
PROJECT MANAGERS: BICON Zambia Ltd
ENGINEERS : BICON Zambia Ltd (All disciplines)
CONTRACTOR : China Jiangxi Corporation
VALUE : US\$ 0.9 million
DATE : 2004 to 2006



ENGINEERING & PROJECT MANAGEMENT

PROJECT SHEET

**PROVINCIAL AUDITOR GENERAL'S
OFFICE IN 5 PROVINCES OF
ZAMBIA**

CLIENT	: Auditor Generals Office
FUNDING	: World Bank
ENGINEERS	: BICON Zambia Ltd
ARCHITECTS	: Spectrum Architectural Consultants
VALUE	: US\$ 6.0Million
DATE	: 2004 to 2006

DESCRIPTION

In 2004, the Government of the Republic of Zambia through the Auditor General's Office commissioned BICON Zambia Limited as Civil/Structural and Electrical Engineers for the construction of Auditor General's Offices in 5 Provinces through out Zambia namely; North western, Eastern, Western, Luapula and Northern Provinces.

The project consisted of construction of new office blocks in the 5 provincial towns in order to.

BICON Zambia Ltd were responsible for the design and supervision of all the engineering disciplines which include, civil, structural, mechanical and electrical engineering works. The project was completed in 2006.

